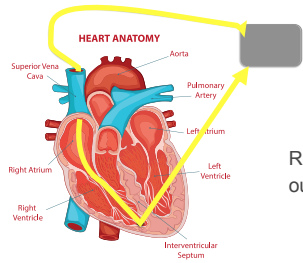




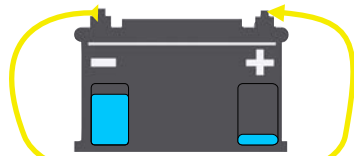
Pacemakers as diagnostic tools

Lead impedance

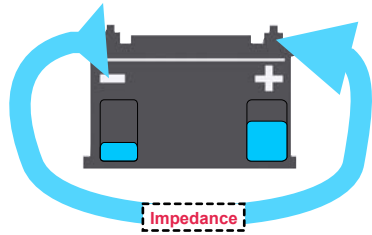


Resistance met by the output pulse

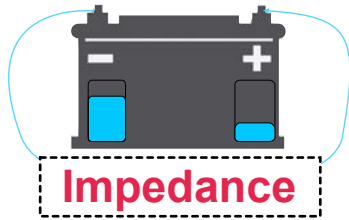
Impedance



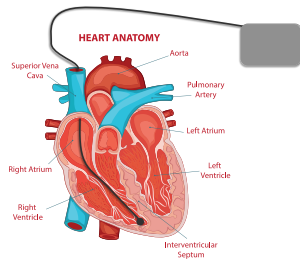
Pacing circuit



Low impedance

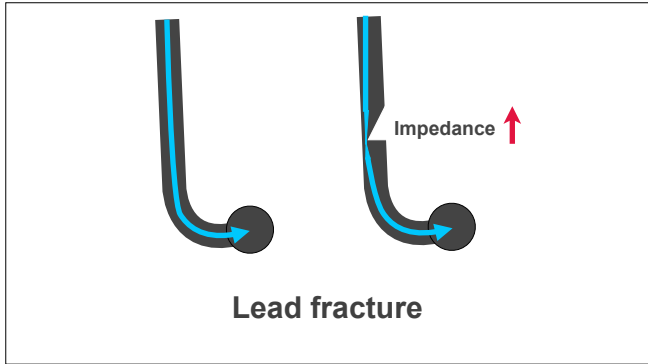


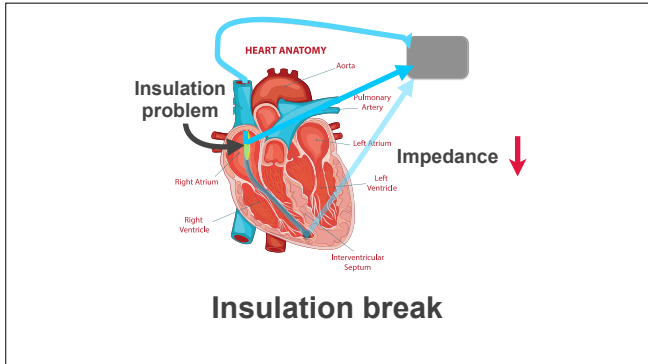
Higher impedance




Between 400
and 1500 ohms

Impedance





Takeaway message



Low impedance is suggestive of an insulation break.
High impedance is suggestive of a lead fracture or an unplugged lead.
